

ARB BASE RACK

FITTING INSTRUCTION

Part Number: 1780550

Description: BASERACK TRI-COLOUR AUX LIGHT

Notes.

- Vehicle accessories which are not properly fitted can be dangerous.
- Please read these instructions carefully prior to fitting, and always comply with the instructions.
- If in any doubt please contact your nearest ARB state office or the stockist from whom it was purchased.
- Do not use this product for any vehicle make or model, other than those specified by ARB.
- This product or its fixing must not be modified in any way.
- The installation of this product may require the use of specialized tools and/or techniques.
- It is recommended that this product is only installed by trained personnel.
- These instructions are correct as at the publication date. ARB Corporation Ltd. cannot be held responsible for the impact of any changes subsequently made by the vehicle manufacturer.
- During installation, it is the duty of the installer to check correct operation/clearances of all components.
- Work safely at all times.
- Unless otherwise instructed, tighten fasteners to specified torque.
- Check bolt torque after 500km & at regular service intervals.

Parts List.

- M8 Coach bolt
- BASERACK bracket pair
- Channel bracket
- M8 Washer
- M8 Nyloc nut
- M6 Captive head screw
- M6 Nyloc nut
- Connector housing
- Connector wedgelock
- Connector terminals (2pcs)
- Work lamp body

ARB 4x4 ACCESSORIES

Corporate Head Office

42-44 Garden St
Kilsyth, Victoria
AUSTRALIA, 3137

Tel: +61 (3) 9761 6622
Fax: +61 (3) 9761 6807

Australian enquiries
North & South American enquiries
Other international enquiries

sales@arb.com.au
sales@arb.com.au
exports@arb.com.au

www.arb.com.au



**Do not pull on the
wiring harness
forcefully**



**Do not connect
wiring harness to
engine**



**Ensure all
connections are
tight and pushed
home**

Installation

1. Layout all components as shown *Figure 1* and confirm all components are included.
2. Find a suitable location on the ARB BASERACK to mount the light. Ensure the light will not interfere with operation of doors, awnings, and other mounted items. ARB recommend fitting the light inboard of the BASERACK to protect from branches or other items that may catch and pull the light from the BASERACK during general driving conditions. Check the wiring loom has adequate length to connect the lights.
3. The light can be assembled in two configurations, consider which configuration, *Figure 2* or *Figure 3*, is more appropriate for your fitment. Note, *Figure 2* will provide the most compact configuration.
4. Once you have selected the mounting location and configuration, loosely assemble as per *Figure 1*, noting the M8 coach bolt must be inserted before the M6 captive head bolt.
5. Install the top bracket onto the BASERACK. Only lightly tighten, then adjust and rotate the light before tightening all bolts.
6. Tighten all fasteners to the recommended torque of 9Nm.
7. Install wiring looms as per instructions provided with harness (sold separately). It is recommended that any wiring or electrical work be conducted by trained personnel. The below ARB looms are available to operate these lights:
 - a. 3500520 Driving light wiring loom.
 - b. 3500810 Lightbar wiring loom.
 - c. 3500820 Loom extension.
8. Test full operation and functions of lights as per operation section of this manual and as per loom instructions.

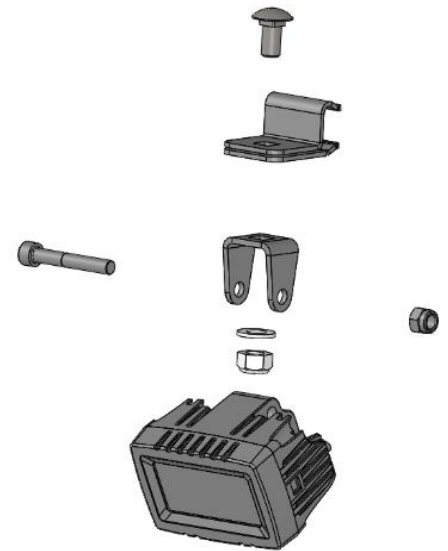


Figure 1

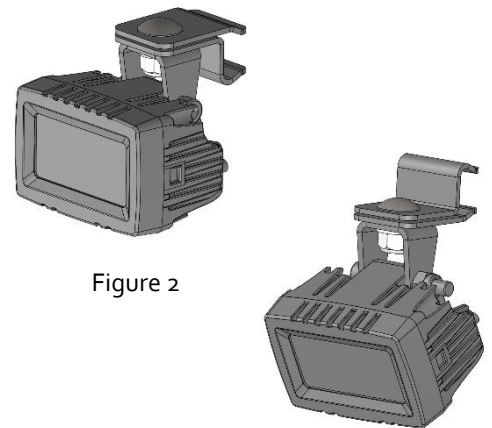


Figure 2

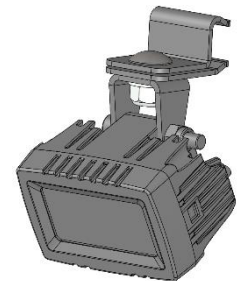


Figure 3

Operation

These work lights are equipped with three colour options as shown below. To change the colour, the light should be turned ON and OFF as per the instructions below.

- White
- Warm
- Amber

Next colour.

To toggle to the next colour in the range, firstly the light must be OFF, then the light must be turned ON and OFF within 3 seconds. The colour will be changed next time the light is turned ON.

Default colour (white).

To select the default colour (white), firstly the light must be OFF, then the light must be turned ON and OFF between 3 and 10 seconds. The colour will be changed next time the light is turned ON.

No colour change.

The light has memory and remembers the previously selected colour. When the light remains ON for more than 10 seconds, there will be no change to the colour.

Summary

Time (off – on – off)	Action
≤ 3sec	Next colour
3sec ~ 10sec	Default colour (white)
≥ 10sec	No colour change

Specifications

LED	30W dual colour
LED Life span	50,000 hrs
Operation Voltage	9–36 VDC
Current Draw @13.2V	0.90A (white), 0.85A (warm), 0.90A (amber)
Power	11W ~ 12W
Beam width	120°
Raw Lumen (Lumen)	1800 (white), 1600 (warm), 1000 (amber)
Effective Lumen (Lumen)	1200 (white), 1000 (warm), 600 (amber)
Colour Temperature (K)	5700 (white), 3000 (warm), 1500 (amber)
Operating Temperature	-30°C to +80°C (-22°F to +176°F)
Weight (excl brackets)	0.234kg (0.516 lbs)
Polycarbonate lens	
Durable UV stable powder coat	
High pressure die-cast aluminium body	
Over voltage protection	
Pressure equalisation breather	
Dust and waterproof to IP68 and IP69K	

Compliance.

This work light has the below compliance.

- CE
- UKCA
- CISPR25
- UNECE R10
- RoHS

Spare Part.

#1780516, includes:

- M8 Coach bolt
- BASERACK bracket pair
- Channel bracket
- M8 Washer
- M8 Nyloc nut



Warranty

ARB Products Warranty Against Defects

ARB warrants the ARB Products against defects in workmanship and materials for the Warranty Period. If defective workmanship or materials become apparent in the Warranty Period, ARB will replace or repair the defective Product. The benefits to the customer given by this warranty are in addition to other rights and remedies of the customer under a law in relation to the goods or services to which the warranty relates.

1. In this warranty: a. ARB means ARB Corporation Limited (ABN 31 006 708 756) of 42-44 Garden St, Kilsyth Victoria 3137 b. ARB Outlet means an outlet that has been authorised by ARB to sell and fit ARB Products c. ARB Product means products that ARB manufactures or for which ARB is the exclusive supplier d. Product Information means the information about the relevant ARB Product that may be contained in any of: documentation provided with the ARB Product, owner's manual, operating manual, service manual or the manufacturer's manual or labels attached to the ARB Product

e. Warranty Period means, in respect of an ARB Product, the period that this warranty against defects applies and which is set out in paragraph 8.

f. Commercial Use means use in industry or commerce including (without limitation) use in the mining industry or as a hire vehicle.

2. To be entitled to claim the warranty, the customer must: a. Have the ARB Product fitted in accordance with the Product Information b. Carry out normal care and maintenance of the ARB Product, including any required by the Product Information c. Provide proof of purchase of the ARB Product d. Make the claim in the Warranty Period.

3. The warranty will not apply in circumstances where the defect is caused by: a. Unusual, improper or negligent use or misuse of the ARB Product b. Incorrect fitting of the ARB Product other than at an ARB Outlet c. Use of non-genuine ARB components in or with the ARB Product d. Use of the ARB Product outside of the requirements of the Product Information.

4. The procedure for the customer to claim the warranty is: a. Return the ARB Product to the nearest ARB Outlet or contact ARB to arrange a time to bring a vehicle fitted with the ARB Product to an ARB Outlet for inspection. Contact details are in paragraph 7 below if further information is required regarding local outlet details

b. Bring proof of purchase of the ARB Product to the ARB Outlet c. ARB will review the ARB Product and advise whether the conditions of this warranty have been met

5. Where ARB accepts a customer's warranty claim, ARB will rectify any defective workmanship or materials at its own expense.

6. Expenses incurred by the customer in claiming the warranty are to be borne by the customer.

7. This warranty is given by: ARB Corporation Limited, 42-44 Garden Street, Kilsyth VIC 3137, Australia. Phone: +61 (3) 9761 6622 Fax: +61 (3) 9721 9090 arb.com.au

8. The period within which a defect in the ARB Products must appear if the customer is to be entitled to claim the warranty is three (3) years starting on the date of purchase unless: a. The ARB Product is used in Commercial Use. In this case, the Warranty Period is one (1) year.

9. The warranty against defects contained in this document replaces any other warranty against defects or voluntary warranty given in relation to the Products.

Our goods come with guarantees that cannot be excluded under the Australian Customer Law. You are entitled to a replacement or refund for a major failure and compensation for any other reasonable foreseeable loss or damage. You are also entitled to have the goods repaired or replaced if the goods fail to be of acceptable quality and the failure does not amount to a major failure.